

EQUIP. TYPE *R-390A/URR* EXP. NO.

Coll 334 0856, 857-00

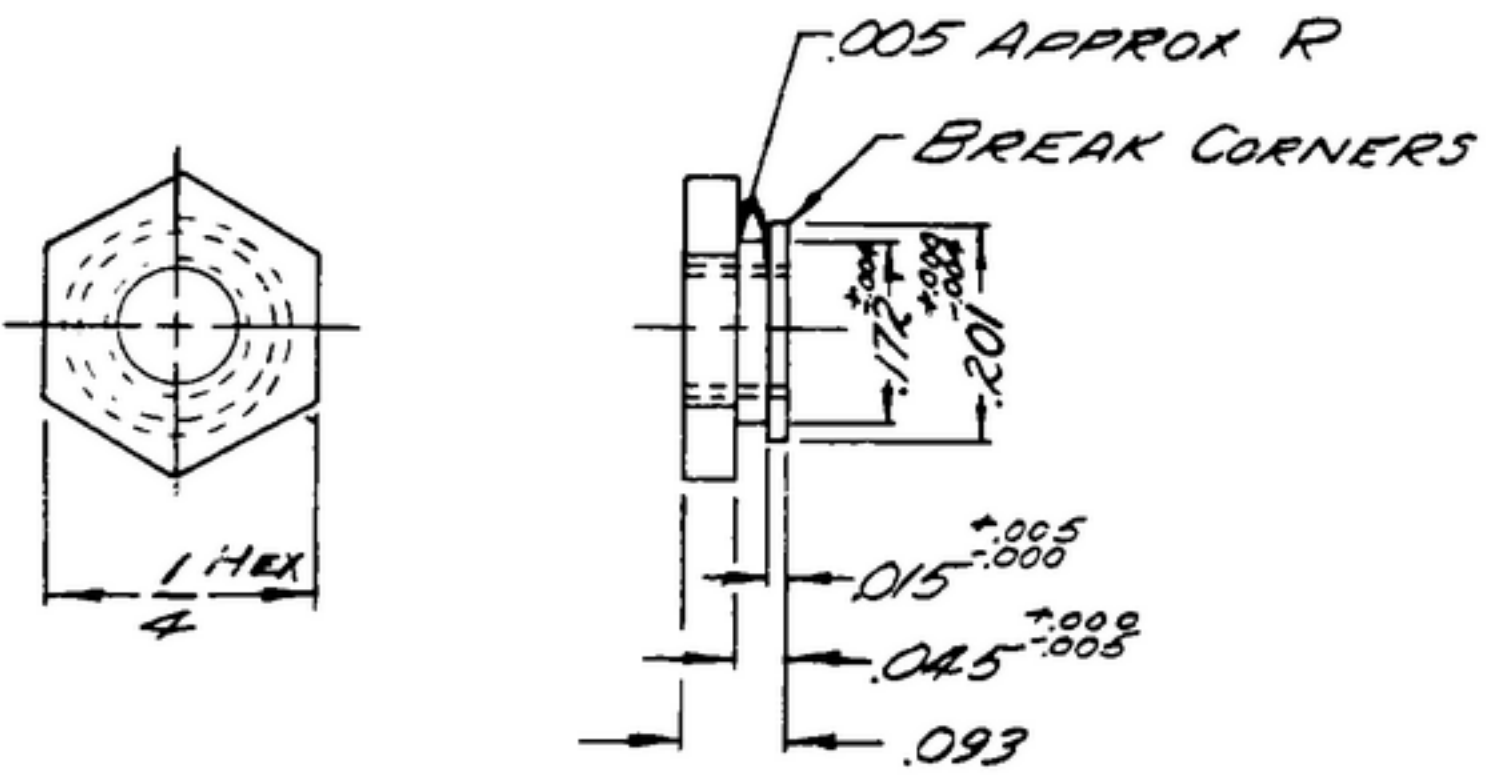
NOTICE: WHEN GOVERNMENT DRAWINGS, SPECIFICATIONS, OR OTHER DATA ARE USED FOR ANY PURPOSE OTHER THAN IN CONNECTION WITH A DEFINITELY RELATED GOVERNMENT PROCUREMENT OPERATION, THE UNITED STATES GOVERNMENT THEREBY INCURS NO RESPONSIBILITY NOR ANY OBLIGATION WHATSOEVER; AND THE FACT THAT THE GOVERNMENT MAY HAVE FORMULATED, FURNISHED, OR IN ANY WAY SUPPLIED THE SAID DRAWINGS, SPECIFICATIONS, OR OTHER DATA IS NOT TO BE REGARDED BY IMPLICATION OR OTHERWISE AS IN ANY MANNER LICENSING THE HOLDER OR ANY OTHER PERSON OR CORPORATION, OR CONVEYING ANY RIGHTS OR PERMISSION TO MANUFACTURE, USE, OR SELL ANY PATENTED INVENTION THAT MAY IN ANY WAY BE RELATED THERE TO.

THIS DOCUMENT HAS BEEN PURCHASED BY THE GOVERNMENT AND MAY BE REPRODUCED AND USED IN CONNECTION WITH ANY GOVERNMENT PROCUREMENT OR MAINTENANCE OPERATION.

* FOR INFORMATION ONLY. CONTRACTOR MAY AT HIS OPTION DEVIATE FROM THESE PROCESS DETAILS.

~~*SWE APPROVAL
SYM PR-10842-4~~

| REVISIONS | | | |
|-----------|-------------------------|-----------|--------------------------------------|
| SYM | DESCRIPTION | DATE | APPROVAL |
| A, | A. ADDED FINISH NOTE | 6 OCT. 59 | 42428-PC 59-A1-51 REV'D PME |
| B | (1) ADDED SUPPLIER P.N. | 31 OCT 61 | 42428-PC-59 REV'D PME |



NOTES:

1. PART MAY BE SUPPLIED BY INLAND AUTOMATIC INC., OMAHA, NEBR., OR EQUAL, PROVIDING IT MEETS THE FOLLOWING REQUIREMENTS AND DIMENSIONS SHOWN.

MATERIAL: STAINLESS STEEL TYPE 303.
ALL BURRS MUST BE REMOVED FROM THREADS. INTERNAL CHAMFERS CREATED BY COUNTERSINKING TO REMOVE BURRS FROM THREADS MUST BE KEPT TO A MINIMUM ON ALL SIZES OF NUTS. NO PART SHALL HAVE LESS THAN 2 FULL-USABLE THREADS. ALL PARTS SHALL PROVIDE MAXIMUM THREAD LENGTH ENGAGEMENT COMMENSURATE WITH THE NEED FOR REMOVAL OF BURRS FROM THREADS.

(A) 2. FINISH E 300 PER SPEC MIL-F-14072

| COLLINS NO. | DASH NO. | THREAD SIZE | INLAND AUTOMATIC INC. PART NO. |
|-------------------------|--------------------------|-------------------------|--------------------------------|
| 559 0263 002 | SM-B-283168-1 | 4-40 NC-2B | 3340427 |
| 559 0264 002 | 1 | 2-6-32 NC-2B | 3340427 |

| COLLINS PART NO. | ITEM | REQS | PART NO. | DESCRIPTION | MATL | MATL SPEC |
|--|------|------|----------|-------------|------|-----------|
| LIST OF MATERIAL | | | | | | |
| COLLINS PART NO. 559 0264 002 <i>0263</i> | | | | | | |

| | | | | | | | | |
|--|-----|-----------|---------|-------------------------------|------------------------|---|----------------------------|--|
| DRAWN <i>RDG</i> | | | | CHECKED <i>[Signature]</i> | APPROVED | GOLLINS-RADIO CO. CEDAR RAPIDS, IOWA 14215-PH- 51-93 | <i>NUT-INSERT, CAPTIVE</i> | DEPARTMENT OF THE ARMY SIGNAL CORPS ENGINEERING LABORATORIES FORT MONMOUTH NEW JERSEY |
| UNLESS OTHERWISE SPECIFIED: DECIMAL DIMENSIONS INCLUDING HOLE SIZES MAY VARY ±.003 FRACTIONAL DIMENSIONS INCLUDING HOLE SIZES MAY VARY ±1/64 MACHINED ANGLES MAY VARY ±.1° SHEARED ANGLES MAY VARY ±.25° BROKEN ANGLES MAY VARY ±.1° ECCENTRICITY BETWEEN ANY DIAMETERS ON THE SAME CENTERLINE SHALL NOT EXCEED .010 TOTAL INDICATOR READING. ALL DIMENSIONS ARE FINISH DIMENSIONS INCLUDING APPLIED FINISH AND ARE GIVEN IN INCHES | | | | REVIEWED PME | APPROVED HLY PME | | | |
| APPLICATION | | | | DATE <i>18 JAN 1956</i> | SCALE <i>1/1</i> | | | |
| COLLINS NO. | QTY | NEXT ASSY | USED ON | <i>SM-B-283168</i> | | | | |